

Addressable Dual I/O Module

Features

- ◇ Providing two pairs of input signals, working mode can be set normally open and normally closed through a programmer. Input signals are separated from the loop.
- ◇ Providing two pairs of output contact signals, it can carry out voltage output through external circuit.
- ◇ Occupying two consecutive addresses. They can be modified through a programmer or fire alarm control panel (FACP).
- ◇ Monitoring power supply.
- ◇ Plug-in structure.

Description

With a microprocessor, I-9303 Addressable Dual I/O Module can communicate with FACP, monitor power supply, judge the logic state of input signal, control output and state indicators.

The module occupies two addresses, and each address can independently receive start command from FACP, close the relative relay and light the indicator. Each address corresponds to one input. After receiving feedback r signal from a device, the module transmits feedback signal to FACP in the way of corresponding address. It can be used as two single input/output modules.

Connection and Cabling

Fig. 1 shows terminals of the module.

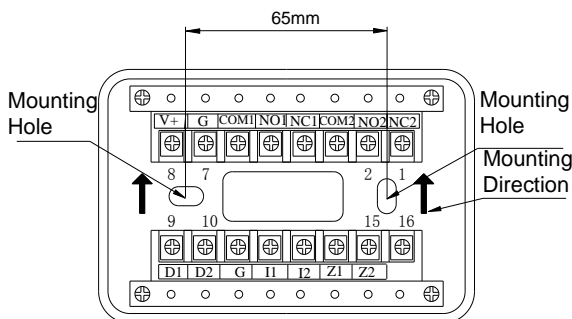


Fig. 1

- Z1, Z2: Loop connection, non-polarized.
- D1, D2: 24VDC power line, non-polarized.
- I1 (I2), G: Volt-free input terminal of Channel I and Channel II.
- V+, G: 24VDC output terminals
- NC1 (NC2), COM1 (COM2), NO1(NO2): Normally open output terminals of Channel I and Channel II.

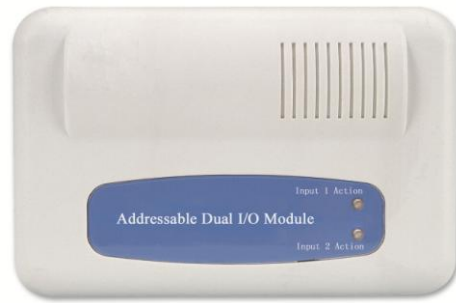
Recommended Cabling

1.5mm² or above fire cable for Z1, Z2 and 24VDC; 1.0mm² or above fire cable for others, subject to local codes.

Installation

The module is simply plugged onto the base after corresponding terminals are connected.

Note the upward arrow for mounting direction (Fig. 1).



If the cable conduit is inside the wall, the base is installed onto the Back Box (Fig. 2). If the conduit is on the surface of the wall, B-9310 Back Box is available (Fig. 3).

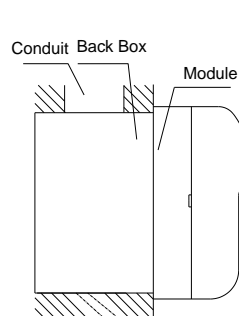


Fig. 2

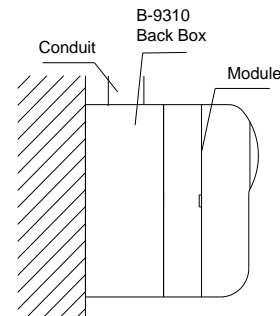


Fig. 3

Application

I-9303 Addressable Dual I/O Module is designed for controlling double input/output devices, and for receiving feedback signals of associated device action. For example, it can control fire door, pump, and smoke exhauster fan. When used to control the position of fire door, it can both control it from open to middle position and from middle to close and identify which position it is.

The module can be programmed in field and working mode can be set by a programmer. Refer to *P-9910B Hand Held Programmer Installation and Operation Manual* for specific operations. Factory default working mode is both channels normally open (4). The parameters can be set in field as follows.

Parameter	Input Mode
1	Channel 1 auto feedback Channel 2 normally open
2	Channel 1 normally open Channel 2 auto feedback
3	Both channels auto feedback
4	Both channels normally open (factory setting)
5	Channel 1 normally closed Channel 2 normally open
6	Channel 1 normally open Channel 2 normally closed
7	Both channels normally closed
8	Channel 1 auto feedback Channel 2 normally closed
9	Channel 1 normally closed Channel 2 auto feedback

- ✧ The module should connect with C-9302A when controlling 220VAC devices, as shown in Fig. 4.
- ✧ The module connects with fire door control box, as shown in Fig. 5.

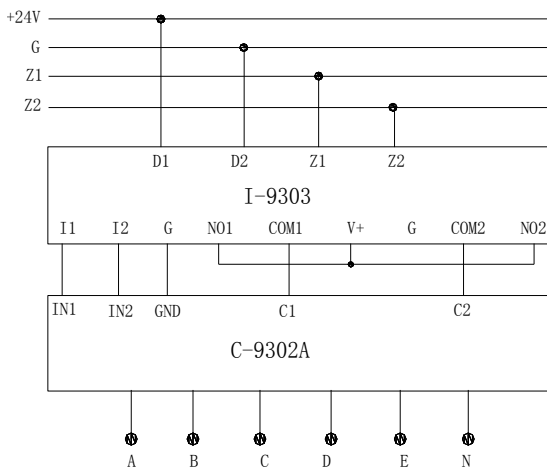


Fig. 4

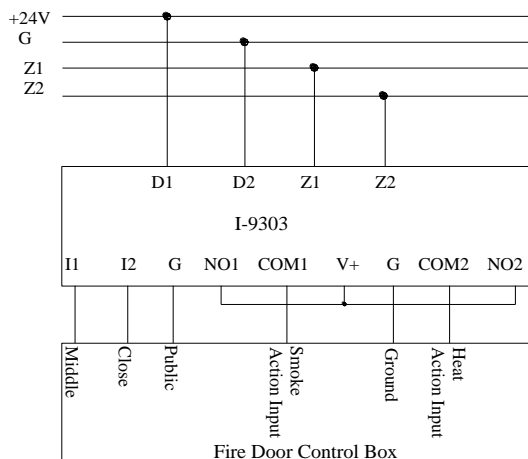


Fig. 5

Note:

Do not connect the module's contact directly to AC control loop so that strong AC interference signal can be prevented from damaging to the module or controlled devices.

The module is not to be used for gas extinguishing equipment.

Specification

Operating Voltage	Loop: 24V(16V~28V) Power: 24VDC(20VDC~28VDC)
Standby Current	Loop ≤ 1mA; Power ≤ 6mA
Action Current	Loop ≤ 4mA; Power ≤ 45mA
Output Capacity	Output contact capacity is 24VDC/5A Voltage output capacity is 24VDC/1A
Output Control Mode	Dry contact output.
Programming Method	Electronically addressed, the module occupies two addresses. The second address is automatically increased 1 to the first set within 1~241.
Indicators	Red (flashes in polling, steadily illuminates in action, quiet when 24V is fault)
Ingress Protection Rating	IP30
Operating Temperature	-10°C ~ +50°C
Relative Humidity	≤ 95%, non condensing
Material and Color of the Enclosure	ABS, white (RAL 9016)
Dimension (L×W×H)	120mm×80mm×43mm (with base)
Weight	About 205g (with base)

Accessories and Tools

Model	Name	Remark
P-9910B	Hand Held Programmer	Order separately
B-9310	Back Box	Order separately

Limited Warranty

GST warrants that the product will be free of charge for repairing or replacing from defects in design, materials and workmanship during the warranty period. This warranty shall not apply to any product that is found to have been improperly installed or used in any way not in accordance with the instructions supplied with the product. Anybody, including the agents, distributors or employees, is not in the position to amend the contents of this warranty. Please contact your local distributor for products not covered by this warranty.

This Data Sheet is subject to change without notice. Please contact GST for more information or questions.

Gulf Security Technology Co., Ltd.

No. 80, Changjiang East Road, QETDZ, Qinhuangdao, Hebei, P. R. China 066004

Tel: +86 (0) 335 8502434 Fax: +86 (0) 335 8502532

service.gst@fs.utc.com www.gst.com.cn